



ELIZABETH LAYTON CENTER

For Hope and Guidance

OUR MISSION

The Elizabeth Layton Center's mission is to provide timely, effective and comprehensive behavioral health services to improve quality of life and recovery for the citizens of Franklin and Miami Counties in partnership with individuals, families and our community.

Overview of ELC Services

Elizabeth Layton Center is a private, not-for-profit, licensed Community Mental Health Center designated to serve Franklin and Miami Counties. We offer a full array of community based, behavioral health services for Youth and Adults of all ages. Compassionate, confidential and quality treatment options are available, including crisis services offered 24 hours/day.

Outpatient

- Diagnostic Evaluation/Intake For Mental Health & Substance Use Disorders
- Individual/Family Therapy
- Group Counseling
- Psychological Testing
- 24/7 Crisis Services

Medical/Psychiatric

- Psychiatric Medication Evaluation
- Prescription Management
- Medication Injection
- Walk-In Access Clinic

Community Based Services

Youth—Serious Emotional Disturbance

- Case Management
- Attendant Care
- Psychosocial Group/Individual
- Early Childhood Program (STEPS)
- Parent Support
- HCBS Waiver Services

Community Support Services

Adults—Severe and Persistent Mental Illness

- Case Management
- Attendant Care
- Psychosocial Group/Individual
- Supported Housing
- Peer Support
- Integrated Health Coordination

2016 ELC Client Demographic Summary

Total Clients Served in 2016 - 3,959

Total Services Provided - 111,598

Gender

Male	1,880	47.5%
Female	2,075	52.5%

Age

<6	112	2.8%
6-12	613	15.5%
13-18	686	17.3%
19-24	346	8.7%
25-34	577	14.5%
35-44	541	13.6%
45-54	481	12.1%
55-64	387	9.8%
65>	224	5.6%

Admissions — 1,550

Average per month	130
Average per week	30
Average per working day	6

Ethnicity

White	3,455	90.3%
Multiracial/Unknown	133	3.5%
Black/African American	100	2.6%
Hispanic	78	2.0%
Native American	54	1.4%
Asian	7	.2%

Client Insurance Coverage

Medicaid	1,575	39.5%
Commercial Insurance	1,287	32.3%
Self Pay (includes Medicaid Spenddown)	598	15.0%
Medicare	529	13.3%

Diagnostic Summary

Depression	31.5%
Anxiety	22.6%
Neurodevelopmental	18.9%
Adjustment Disorders	8.8%
Bipolar Disorders	8.0%
Schizophrenia Spectrum	6.6%
Substance Use	2.6%
Obsessive Compulsive Disorders	1.0%

2016 ELC Client Demographics - By County

Total Clients Served: 2,067
Total Services: 63,777

Admissions — 780

Average per month	65
Average per week	15
Average per working day	3

Gender

Male	961	46.6%
Female	1103	53.4%

Age

<6	52	2.5%
6-12	305	14.7%
13-18	306	14.8%
19-24	181	8.7%
25-34	342	16.5%
35-44	284	13.7%
45-54	268	9.0%
55-64	207	10.0%
65>	127	6.1%

Ethnicity

White	1869	91.8%
Other/Unknown	53	2.6%
Black/African American	42	2.1%
Hispanic	36	1.8%
American Indian	34	1.7%
Asian	3	0.1%

Annual Household Income

\$0 to \$11,490	1104	52.1%
\$11,491 to \$15,282	151	7.1%
\$15,283 to \$22,980	257	12.1%
\$22,981 to \$35,000	256	12.1%
\$35,001 to \$42,000	85	4.0%
\$42,001 >	266	12.6%

Client Insurance Coverage

Medicaid	796	38.3%
Commercial Insurance	622	29.9%
Self Pay	338	16.3%
Medicare	322	15.5%

F
R
A
N
K
L
I
N
C
O
U
N
T
Y

Total Clients Served: 1,892
Total Services: 47,821

Admissions — 770

Average per month	64
Average per week	15
Average per working day	3

Gender

Male	919	48.6%
Female	972	51.4%

Age

<6	60	3.2%
6-12	308	16.3%
13-18	380	20.1%
19-24	165	8.7%
25-34	235	12.4%
35-44	257	13.6%
45-54	213	11.2%
55-64	180	9.5%
65>	97	5.1%

Ethnicity

White	1586	88.6%
Multiracial/Unknown	80	4.5%
Black/African American	58	3.2%
Hispanic	44	2.5%
Native American	18	1.0%
Asian	4	.2%

Annual Household Income

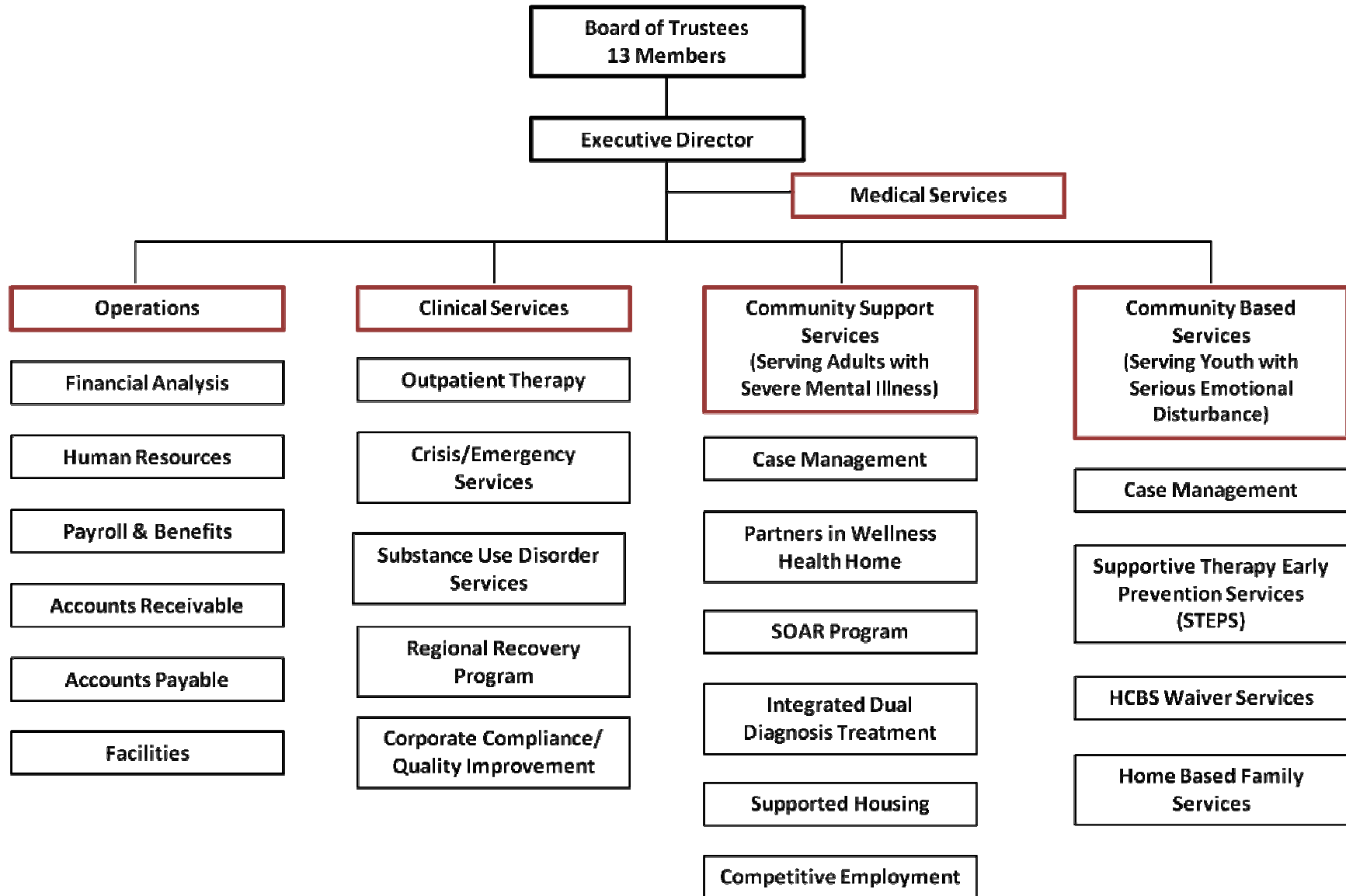
\$0 to \$11,490	1113	58.3%
\$11,491 to \$15,282	125	6.5%
\$15,283 to \$22,980	159	8.3%
\$22,981 to \$35,000	186	9.7%
\$35,001 to \$42,000	69	3.6%
\$42,001 >	257	13.5%

Client Insurance Coverage

Medicaid	779	40.8%
Commercial Insurance	665	34.8%
Self Pay	260	13.6%
Medicare	207	10.8%

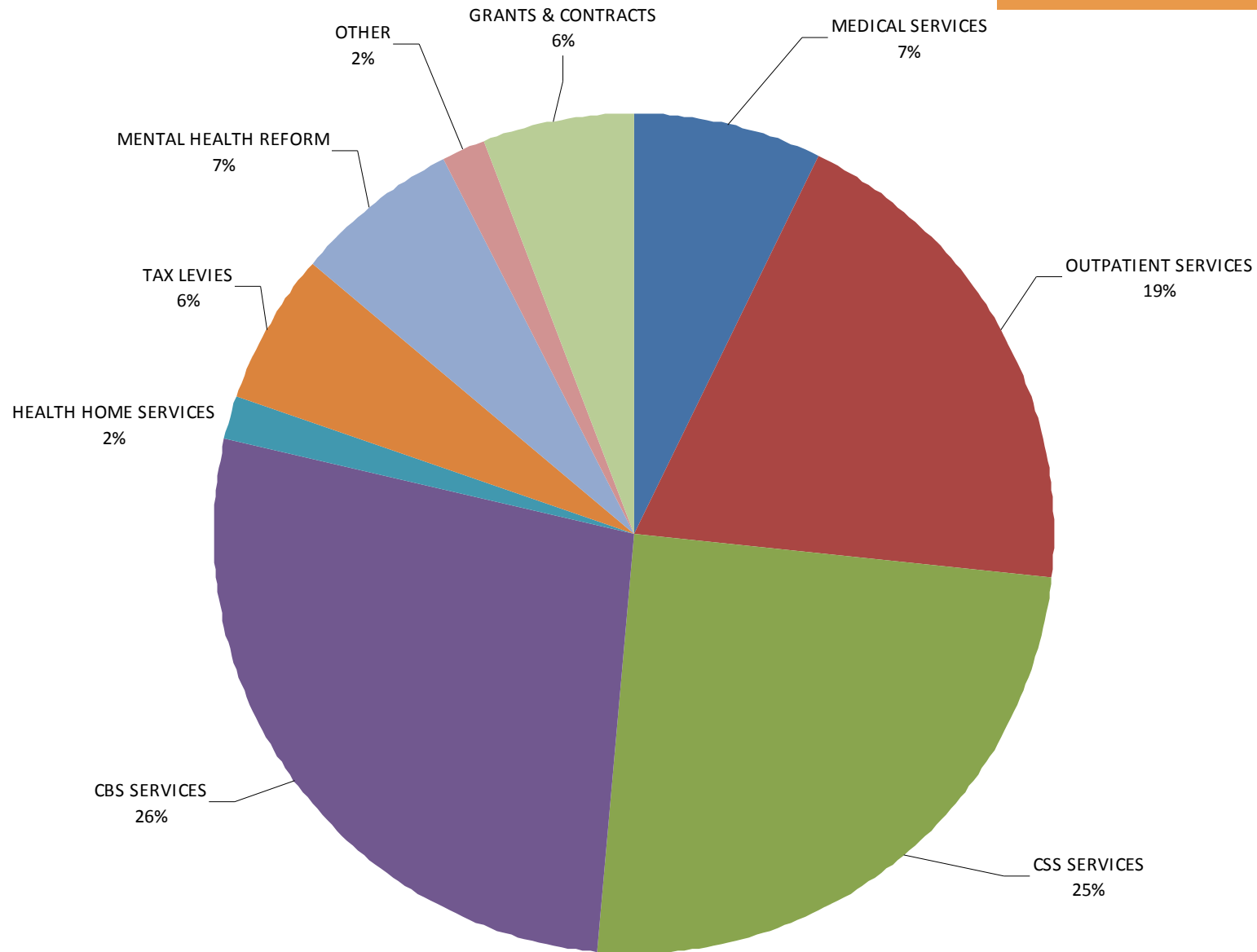
M
I
A
M
I
C
O
U
N
T
Y

Organizational Structure



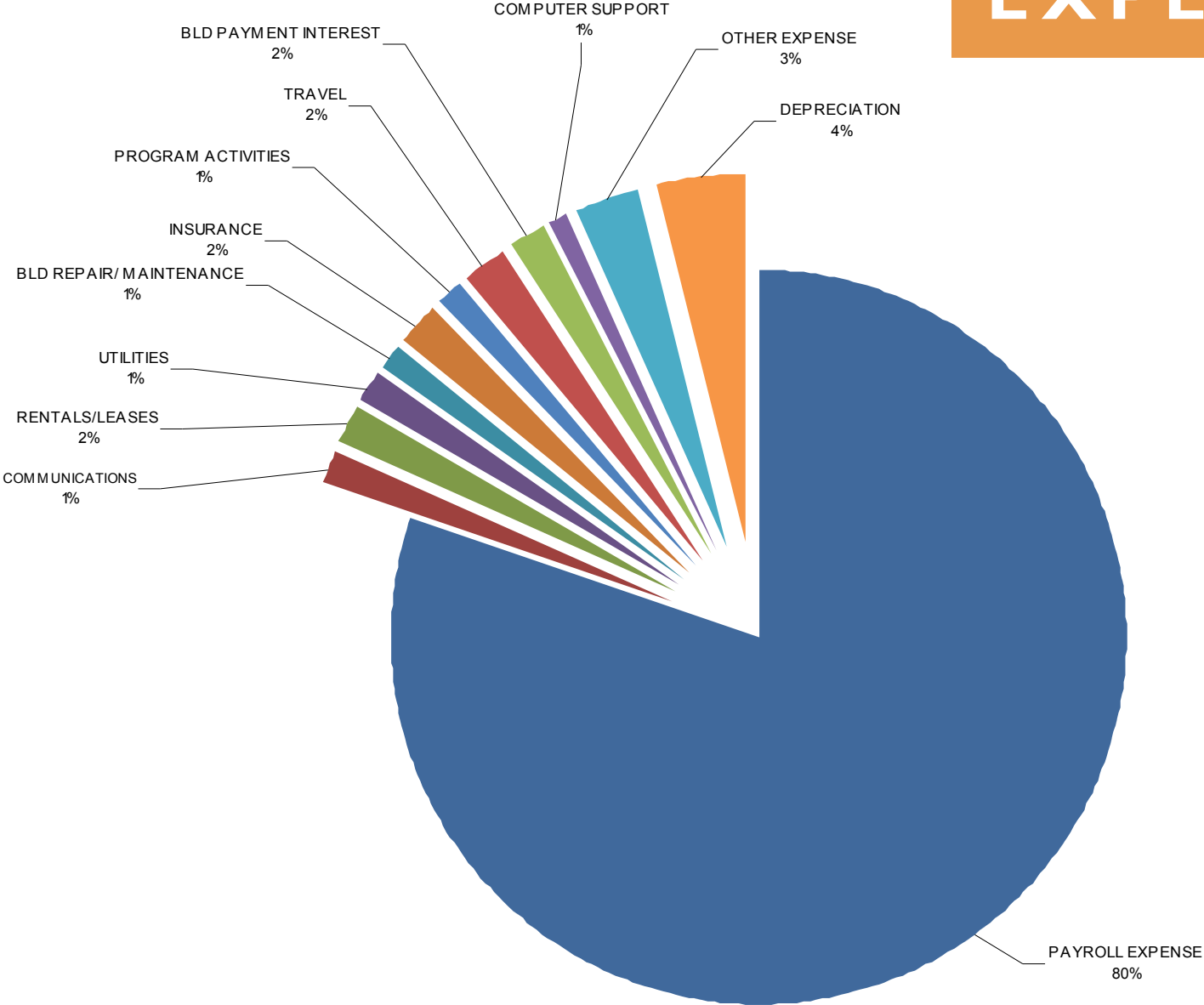
2016 ELC By the Numbers

REVENUE



2016 ELC By the Numbers

EXPENSES



ELC Board of Trustees, Administration & Locations

Board of Trustees

Donna Dornes, President
Kirk Johnston, Vice President
Tom Lundblad, Secretary
Matt Heyn, Treasurer
David Cannon
Don Cawby
Debra Horne
Lisa Johnson
Paul Luce
Cathy Macfarlane
Michelle Stegman

Administration

Leslie Bjork, PsyD, LP
Executive Director
Gerald Gambrill, MD
Medical Director
Perry Chapman, MBA
Chief Financial Officer
Jennifer Jackson-Colburn, LSCSW
Clinical Director
Megan Darling, PsyD, LP
Director of Community Support Services
Amy Wacker, LPC
Director of Community Based Services
Donna Johnson, LCP, LCAC
Director of Quality Assurance/Risk Management
John Schlegel
IT Director
Kiki Heck
Executive Integration Specialist

Franklin County Locations

Outpatient & Children's Services

2537 Eisenhower Road
PO Box 677
Ottawa, Kansas 66067
Telephone: 785.242.3780
Facsimile: 785.242.6397

Community Support Services

204 East 15th Street
PO Box 677
Ottawa, Kansas 66067
Telephone: 785.242.3780
Facsimile: 785.242.3593

Miami County Locations

Outpatient & Children's Office

25955 W 327th Street
PO Box 463
Paola, Kansas 66071
Telephone: 913.557.9096
Facsimile: 913.294.9247

Community Support Services

401 North East Street
Paola, Kansas 66071
Telephone: 913.557.9096
Facsimile: 913.294.4996