



# **Annual Report**

---

## **2015**

### **OUR MISSION**

The Elizabeth Layton Center provides effective mental health services in our communities so that quality of life is improved for our clients and their families.

# Overview of Services

---

The Elizabeth Layton Center is a private not-for-profit community mental health center serving the mental health needs of the residents of Franklin and Miami counties providing a comprehensive array services for our community.

## **Outpatient**

- Diagnostic Evaluation/Intake
- Individual/Family Therapy
- Group Counseling
- Psychological Testing
- 24/7 Crisis Services

## **Medical/Psychiatric**

- Psychiatric Medication Evaluation
- Prescription Management
- Medication Injection
- Walk-In Access Clinic
- In-County Residents Only

## **Community Based Services**

### **Children/Youth—Serious Emotional Disturbance**

- Case Management
- Attendant Care
- Psychosocial Group/Individual
- Early Childhood Program (STEPS)
- Parent Support
- HCBS Waiver Services

## **Community Support Services**

### **Adults—Severe and Persistent Mental Illness**

- Case Management
- Attendant Care
- Psychosocial Group/Individual
- Supported Housing
- Peer Support
- Integrated Health Coordination

# ELC Recent History of Clients Served

## 2015 — Total Clients Served 4058

### Franklin County

2109 Total Served

Male 1011 Female 1098

New Admissions 808

### Miami County

1949 Total Served

Male 938 Female 1011

New Admissions 845

## 2014 — Total Clients Served 4061

### Franklin County

2024 Total Served

Male 995 Female 1029

New Admissions 712

### Miami County

2037 Total Served

Male 1007 Female 1030

New Admissions 798

## 2013 — Total Clients Served 4234

### Franklin County

2205 Total Served

Male 1038 Female 1167

New Admissions 922

### Miami County

2029 Total Served

Male 1000 Female 1029

New Admissions 999

## 2012 — Total Clients Served 4112

### Franklin County

2230 Total Served

Male 1051 Female 1178

New Admissions 932

### Miami County

1884 Total Served

Male 942 Female 941

New Admissions 838

## 2011 — Total Clients Served 3995

### Franklin County

2236 Total Served

Male 1104 Female 1132

New Admissions 1064

### Miami County

1759 Total Served

Male 877 Female 882

New Admissions 786

## 2010 — Total Clients Served 3783

### Franklin County

2091 Total Served

Male 1019 Female 1072

New Admissions 977

### Miami County

1692 Total Served

Male 839 Female 853

New Admissions 736

# ELC Client Summary for 2015

**Total Clients Served: 4058**

## Gender

Male	1949	48%
Female	2209	52%

## Age

<6	75	1.9%
6-12	617	15.4%
13-18	708	17.7%
19-24	368	9.2%
25-34	614	15.3%
35-44	531	13.3%
45-54	527	13.2%
55-64	362	9.0%
65>	200	5.0%

## Ethnicity

White	3484	90.6%
Multiracial/Unknown	141	3.7%
Black/African American	104	2.7%
Hispanic	61	1.6%
Native American	46	1.2%
Asian	9	.2%

## Client Insurance Coverage

Medicaid	1804	44.0%
Commercial Insurance	1197	29.2%
Self Pay (includes Medicaid Spenddown)	563	13.7%
Medicare	539	13.1%

## Admissions — 1653

Average per month	138
Average per week	32
Average per working day	6

## Diagnostic Summary

Depressive Disorders	26.1%
Bipolar & Other Mood Disorders	14.3%
Anxiety Disorders	13.9%
Adjustment Disorders	11.2%
Attention Deficit Hyperactivity Disorders	10.4%
Schizophrenia & Other Psychotic Disorders	7.0%
Conduct/Oppositional/Disruptive Disorders	6.3%
Other Mental Health Diagnoses	3.6%
Impulse Control Disorder	.7%
Substance Use Disorders	2.1%
Personality Disorders	.4%
Autism Disorders	.4%

ELC staff served 2602 adults and 1400 youth in Franklin and Miami counties in 2015.

On average, 6 new clients were admitted for services every business day.

Everyday stresses can build up and drain a person of their ability to rest, have energy, be productive, concentrate, have relationships and enjoy life.

We see clients of all ages, every ethnicity and every income level.

The most common diagnoses are bipolar, depression and anxiety disorders.

## Screenings for Inpatient Hospitalization

Year	<u>Franklin County</u>		<u>Miami County</u>	
	Private Hospital	State Hospital	Private Hospital	State Hospital
2007	26	99	48	171
2008	30	204	76	266
2009	54	179	49	280
2010	57	176	73	296
2011	81	184	75	308
2012	116	188	86	292
2013	110	170	90	372
2014	114	179	89	350
2015	125	196	78	248

# Client Demographics by County

## Franklin County — Client Summary

Clients Served in 2015: 2109

### Gender

Male	1011	47.9%
Female	1098	52.1%

### Age

<6	41	2.0%
6-12	272	13.1%
13-18	319	15.4%
19-24	215	10.4%
25-34	346	16.7%
35-44	273	13.2%
45-54	293	14.1%
55-64	196	9.5%
65>	118	5.7%

### Ethnicity

White	1866	92.1%
Other/Unknown	57	2.8%
Black/African American	47	2.3%
American Indian	25	1.2%
Hispanic	29	1.4%
Asian	3	0.1%

### Annual Household Income

\$0 to \$11,490	962	48.4%
\$11,491 to \$15,282	158	7.9%
\$15,283 to \$22,980	294	14.8%
\$22,981 to \$35,000	239	12.0%
\$35,001 to \$42,000	90	4.5%
\$42,001>	246	12.4%

### Client Insurance Coverage

Medicaid	8840	41.7%
Self Pay	331	15.7%
Commercial Insurance	564	26.7%
Medicare	334	15.8%

### Admissions — 808

Average per month	67.3
Average per week	15.5
Average per working day	3.1

## Miami County — Client Summary

Clients Served in 2015: 1949

### Gender

Male	938	48.1%
Female	1011	51.9%

### Age

<6	34	1.8%
6-12	345	17.9%
13-18	389	20.2%
19-24	153	7.9%
25-34	268	13.9%
35-44	258	13.4%
45-54	234	12.1%
55-64	166	8.6%
65>	82	4.3%

### Ethnicity

White	1618	89.0%
Other/Unknown	84	4.6%
Black/African American	57	3.1%
American Indian	21	1.2%
Hispanic	32	1.8%
Asian	6	0.3%

### Annual Household Income

\$0 to \$11,490	636	42.5%
\$11,491 to \$15,282	119	8.0%
\$15,283 to \$22,980	179	12.0%
\$22,981 to \$35,000	195	13.0%
\$35,001 to \$42,000	76	5.1%
\$42,001>	291	19.5%

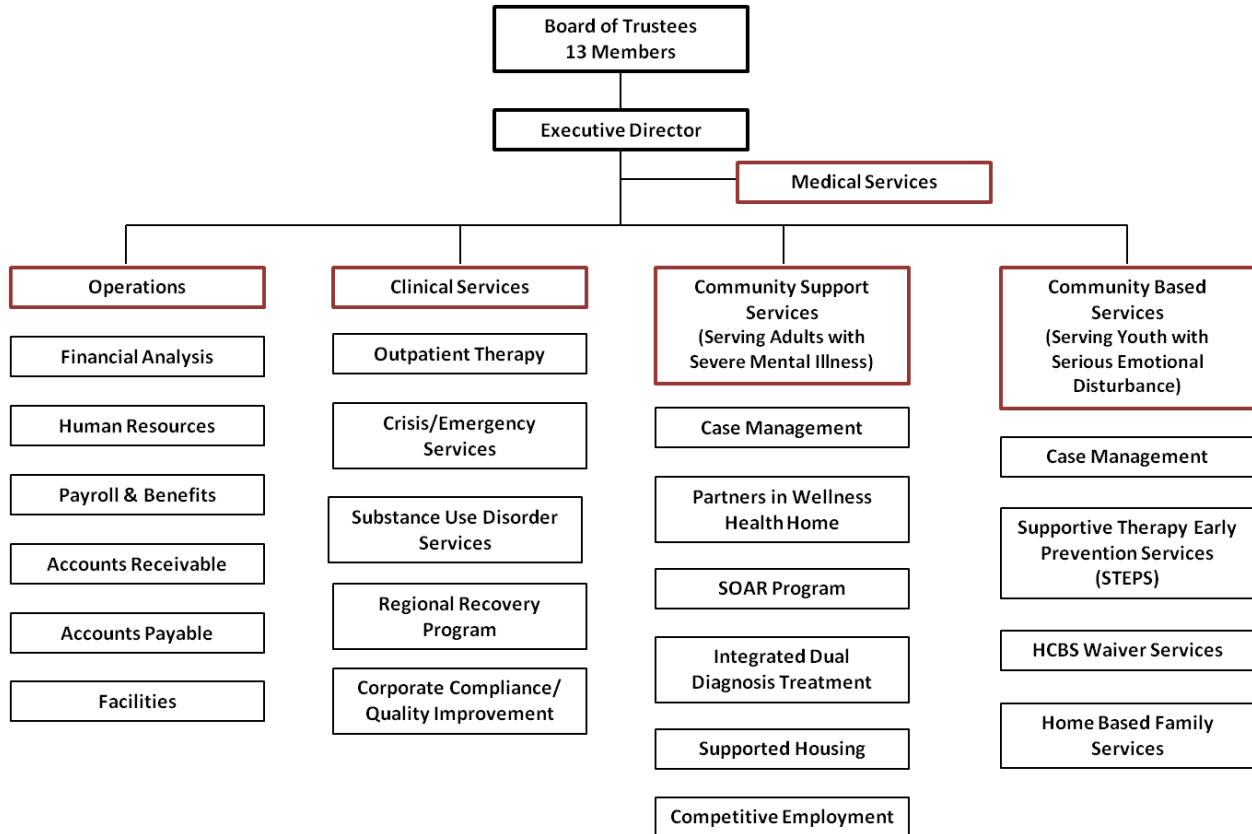
### Client Insurance Coverage

Medicaid	924	46.3%
Self Pay	232	11.6%
Commercial Insurance	633	31.7%
Medicare	205	10.3%

### Admissions — 845

Average per month	70.4
Average per week	16.25
Average per working day	3.25

# Organizational Structure

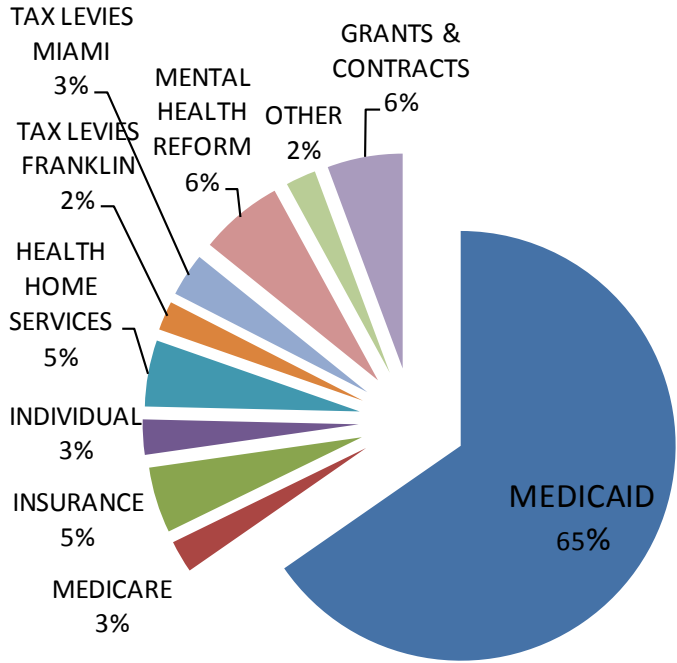


## Full-time Equivalent Staff by County

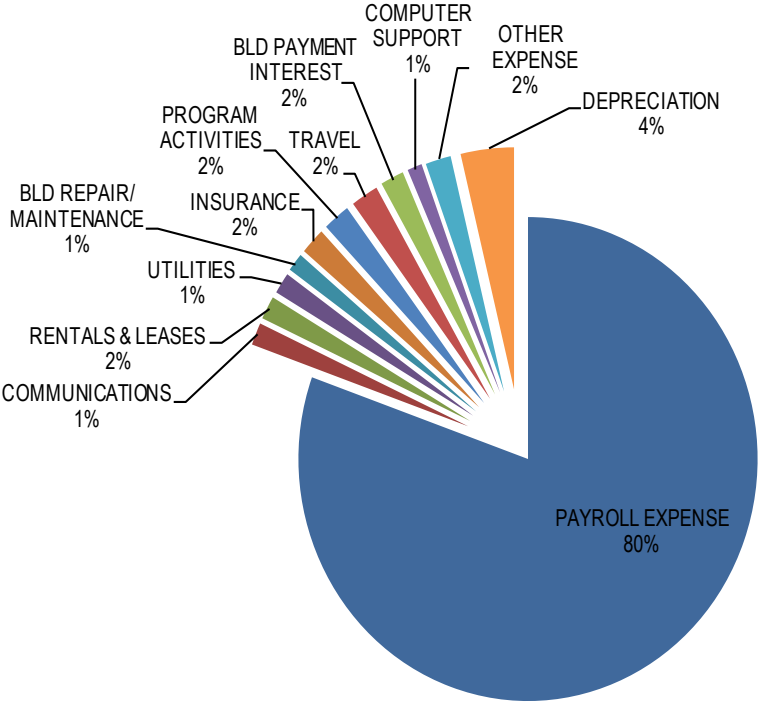
	<u>Franklin</u>	<u>Miami</u>	<u>Both Counties</u>
Administration			7.00
Therapists	9.00	10.50	
Medical Providers (MD & APRN)	2.50	1.50	
Health Home Program	3.00	2.00	
CBS Case Managers	12.50	12.50	
Parent Support	1.00	1.00	
Youth Specialists	3.00	3.00	
CSS Case Managers	12.00	5.00	
CSS Psychosocial Group Leaders	2.00	1.00	
Adult Specialists	6.50	5.25	
Peer Support	1.00	1.50	
Transportation	2.00	1.50	
Support/Clerical/ IT & Custodial Services	10.00	11.00	9.50

# Financial Report

## Funding Sources 2015: Total \$7,609,702



## Expenditure Types 2015: Total \$7,559,807



# Board of Trustees Administration and Locations

## **Board of Trustees**

Donna Dornes, President  
Kirk Johnston, Vice President  
Stephen Feinstein, PhD, Secretary  
Richard Nienstedt, Treasurer  
David Cannon  
Stephanie Cutburth  
Matt Heyn  
Debra Horne  
Lisa Johnson  
Kirk Johnston  
Tom Lunblad  
Jim Trendel  
Keith Tully  
1 Open Position for SED Parent

## **Administration**

Leslie Bjork, PsyD, LP  
Executive Director  
Gerald Gambrill, MD  
Medical Director  
Perry Chapman, MBA  
Chief Financial Officer  
Jennifer Jackson-Colburn, LSCSW  
Acting Clinical Director  
Megan Darling, PsyD, LP  
Director of Community Support Services  
Amy Wacker, LPC  
Director of Community Based Services  
Donna Johnson, LCP, LCAC  
Quality Assurance/Risk Management Coordinator  
Kiki Heck  
Executive Integration Specialist

## **Franklin County Locations**

### **Outpatient & Children's Services**

2537 Eisenhower Road  
PO Box 677  
Ottawa, Kansas 66067  
Telephone: 785.242.3780  
Facsimile: 785.242.6397

### **Community Support Services**

204 East 15<sup>th</sup> Street  
PO Box 677  
Ottawa, Kansas 66067  
Telephone: 785.242.3780  
Facsimile: 785.242.3593

## **Miami County Locations**

### **Outpatient & Children's Office**

25955 W 327th Street  
PO Box 463  
Paola, Kansas 66071  
Telephone: 913.557.9096  
Facsimile: 913.294.9247

### **Community Support Services**

401 North East Street  
Paola, Kansas 66071  
Telephone: 913.557.9096  
Facsimile: 913.294.4996

[www.laytoncenter.org](http://www.laytoncenter.org)

**The Elizabeth Layton Center continues  
to leave its mark in the community.**