



Annual Report

2014

OUR MISSION

The Elizabeth Layton Center provides effective mental health services in our communities so that quality of life is improved for our clients and their families.

ELC Recent History of Clients Served

2014 — Total Clients Served 4061

Franklin County

2024 Total Served

Male 995 Female 1029

New Admissions 712

Miami County

2037 Total Served

Male 1007 Female 1030

New Admissions 798

2013 — Total Clients Served 4234

Franklin County

2205 Total Served

Male 1038 Female 1167

New Admissions 922

Miami County

2029 Total Served

Male 1000 Female 1029

New Admissions 999

2012 — Total Clients Served 4112

Franklin County

2230 Total Served

Male 1051 Female 1178

932 New Admissions

Miami County

1884 Total Served

Male 942 Female 941

838 New Admissions

2011 — Total Clients Served 3995

Franklin County

2236 Total Served

Male 1104 Female 1132

1064 New Admissions

Miami County

1759 Total Served

Male 877 Female 882

786 New Admissions

2010 — Total Clients Served 3783

Franklin County

2091 Total Served

Male 1019 Female 1072

977 New Admissions

Miami County

1692 Total Served

Male 839 Female 853

736 New Admissions

ELC Client Summary for 2014

Total Clients Served: 4061

Gender

Male	2002	49%
Female	2059	51%

Age

<6	107	2.6%
6-12	650	16.0%
13-18	694	17.1%
19-24	362	8.9%
25-34	595	14.7%
35-44	542	13.4%
45-54	543	13.4%
55-64	365	8.9%
65>	201	5.0%

Ethnicity

White	3480	90.8%
Multiracial/Unknown	158	4.1%
Black/African American	93	2.4%
Hispanic	49	1.3%
Native American	51	1.3%
Asian	4	.1%

Client Insurance Coverage

Medicaid	1859	45.7%
Commercial Insurance	1087	26.8%
Self Pay (includes Medicaid Spenddown)	581	14.3%
Medicare	534	13.2%

Admissions — 1510

Average per month	126
Average per week	29
Average per working day	6

Diagnostic Summary

Bipolar & Other Mood Disorders	23.5%
Anxiety Disorders	17.6%
Depressive Disorders	16.2%
Attention Deficit Hyperactivity Disorders	13.7%
Conduct/Oppositional/Disruptive Disorders	8.8%
Adjustment Disorders	7.2%
Schizophrenia & Other Psychotic Disorders	6.6%
Other Mental Health Diagnoses	2.5%
Substance Use Disorders	2.0%
Personality Disorders	1.3%
Impulse Control Disorder	.7%

ELC staff served 2608 adults and 1451 youth in Franklin and Miami counties in 2014.

On average, 6 new clients were admitted for services every business day.

Everyday stresses can build up and drain a person of their ability to rest, have energy, be productive, concentrate, have relationships and enjoy life.

We see clients of all ages, every ethnicity and every income level.

The most common diagnoses are bipolar, depression and anxiety disorders.

Screenings for Inpatient Hospitalization Related to Psychosis or Suicidal Intent

Franklin County

Year	Private Hospital	State Hospital
2007	26	99
2008	30	204
2009	54	179
2010	57	176
2011	81	184
2012	116	188
2013	110	170
2014	114	179

Miami County

Private Hospital	State Hospital
48	171
76	266
49	280
73	296
75	308
86	292
90	372
89	350

Client Demographics by County

Franklin County — Client Summary

Clients Served in 2014: 2024

Gender

Male	995	49.1%
Female	1029	50.9%

Age

<6	54	2.7%
6-12	321	15.8%
13-18	307	15.2%
19-24	194	9.6%
25-34	311	15.4%
35-44	266	13.2%
45-54	274	13.5%
55-64	186	9.2%
65>	109	5.4%

Ethnicity

White	1805	91.2%
Other/Unknown	60	3.0%
Black/African American	44	2.2%
American Indian	38	1.9%
Hispanic	30	1.5%
Asian	3	0.2%

Annual Household Income

\$0 to \$11,490	901	46.3%
\$11,491 to \$15,282	174	9.0%
\$15,283 to \$22,980	290	15.0%
\$22,981 to \$35,000	250	12.9%
\$35,001 to \$42,000	90	4.6%
\$42,001>	239	12.2%

Client Insurance Coverage

Medicaid	884	43.7%
Self Pay	323	16.0%
Commercial Insurance	509	25.1%
Medicare	308	15.2%

Admissions — 712

Average per month	59
Average per week	14
Average per working day	3

Miami County — Client Summary

Clients Served in 2014: 2037

Gender

Male	1007	49.4%
Female	1030	50.6%

Age

<6	53	2.6%
6-12	329	16.1%
13-18	387	19.0%
19-24	168	8.2%
25-34	284	14.0%
35-44	276	13.6%
45-54	269	13.2%
55-64	179	8.8%
65>	92	4.5%

Ethnicity

White	1675	90.3%
Other/Unknown	98	5.3%
Black/African American	49	3.0%
American Indian	11	0.1%
Hispanic	21	1.2%
Asian	1	0.1%

Annual Household Income

\$0 to \$11,490	741	42.4%
\$11,491 to \$15,282	154	8.8%
\$15,283 to \$22,980	213	12.2%
\$22,981 to \$35,000	237	13.6%
\$35,001 to \$42,000	82	4.7%
\$42,001>	320	18.3%

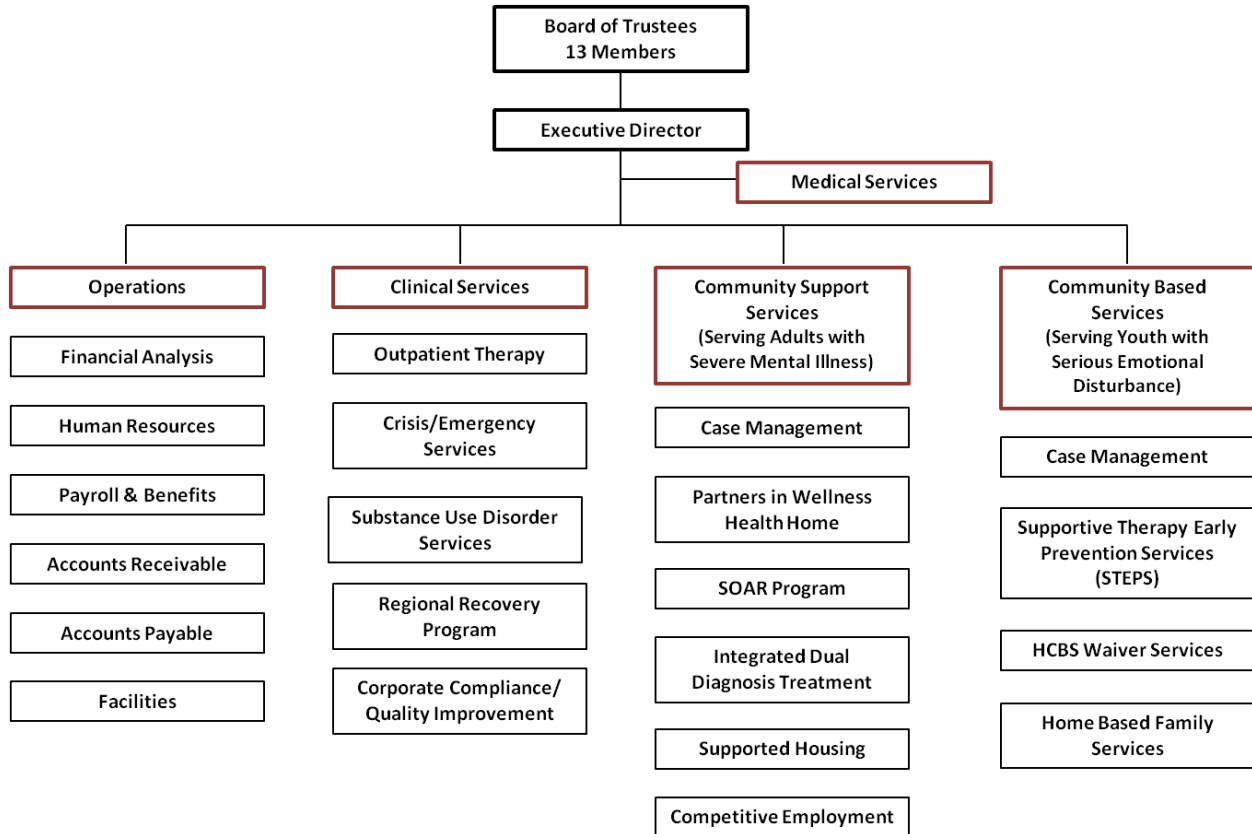
Client Insurance Coverage

Medicaid	975	47.8%
Self Pay	258	12.7%
Commercial Insurance	578	28.4%
Medicare	226	11.1%

Admissions — 798

Average per month	67
Average per week	15
Average per working day	3

Organizational Structure

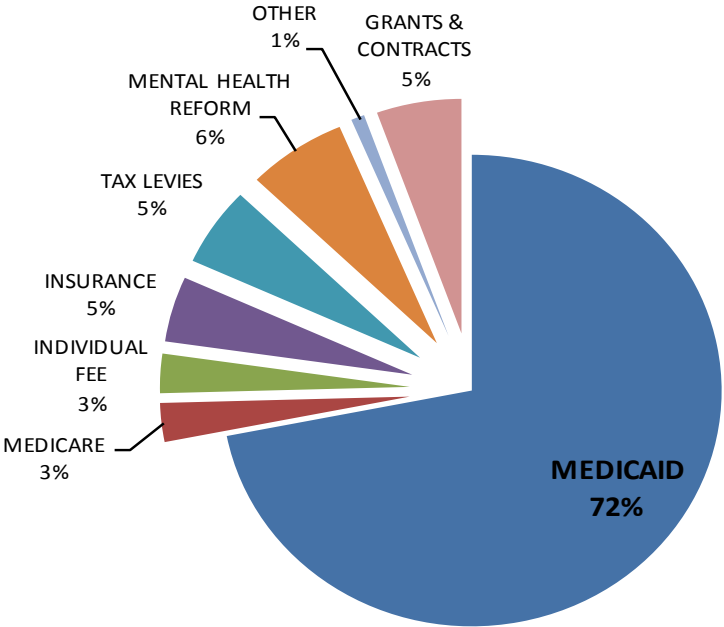


Full-time Equivalent Staff by County

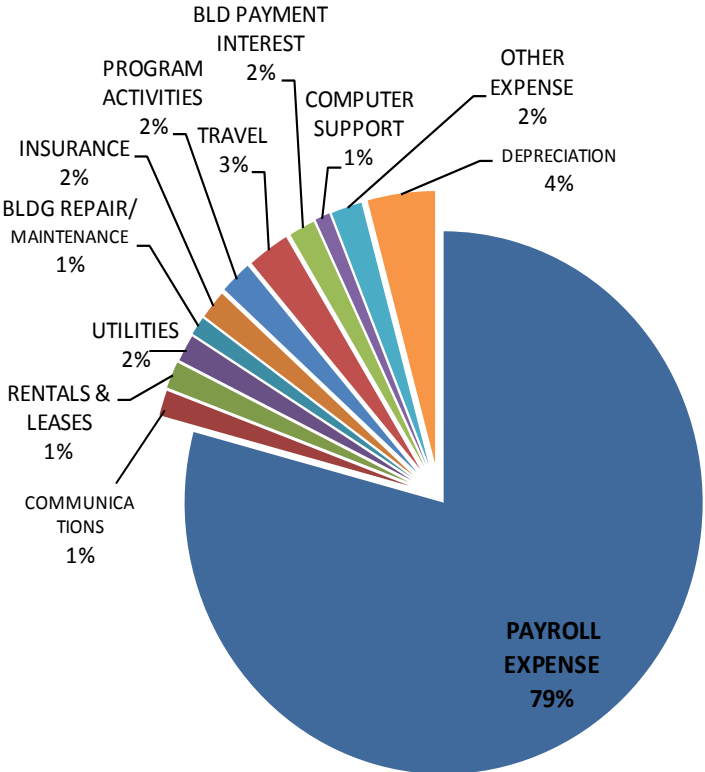
	<u>Franklin</u>	<u>Miami</u>	<u>Both Counties</u>
Administration			6.00
Therapists	9.00	11.50	
Medical Providers (MD & APRN)	3.25	1.25	
Health Home Program	3.00	3.00	
CBS Case Managers	12.50	12.50	
Parent Support	1.00	1.00	
Youth Specialists	3.00	2.00	
CSS Case Managers	12.00	5.00	
Adult Specialists	6.75	5.25	
Peer Support	1.50	1.50	
Support/Clerical/ IT & Custodial Services	14.75	11.00	4.50

Financial Report

Funding Sources 2014: Total \$7,426,357.65



Expenditure Types 2014: Total \$7,491,054.71



Board of Trustees

Administration and Locations

Board of Trustees

Keith Tully, President
Donna Dornes, Vice President
Stephen Feinstein, PhD, Secretary
Richard Nienstedt, Treasurer
David Cannon
LeRoy Elliott
Matt Heyn
Debra Horne
Lisa Johnson
Kirk Johnston
Tom Lunblad
Jim Trendel
1 Open Position for SED Parent

Administration

Leslie Bjork, PsyD, LP
Interim Executive Director
Gerald Gambrill, MD
Medical Director
Perry Chapman, MBA
Chief Financial Officer
Donna Johnson, LCP, LCAC
Acting Clinical Director
Megan Darling, PsyD, LP
Director of Community Support Services
Amy Wacker, LPC
Director of Community Based Services
Kiki Gladman
Executive Integration Specialist

Franklin County Locations

Outpatient & Children's Services

2537 Eisenhower Road
PO Box 677
Ottawa, Kansas 66067
Telephone: 785.242.3780
Facsimile: 785.242.6397

Community Support Services

204 East 15th Street
PO Box 677
Ottawa, Kansas 66067
Telephone: 785.242.3780
Facsimile: 785.242.3593

Miami County Locations

Outpatient & Children's Office

25955 W 327th Street
PO Box 463
Paola, Kansas 66071
Telephone: 913.557.9096
Facsimile: 913.294.9247

Community Support Services

401 North East Street
Paola, Kansas 66071
Telephone: 913.557.9096
Facsimile: 913.294.4996

www.laytoncenter.org

The Elizabeth Layton Center continues to leave its mark in the community.

- We hope this annual report has helped you understand the scope of our services.